

FOR SALE

BERTHON
INTERNATIONAL

Windy 46 Chinook > **HAVILDAR II**



FOR SALE

BERTHON
INTERNATIONAL

Windy 46 Chinook > **HAVILDAR II**

An absolutely classy act, the Windy 46 Chinook is a giant among men. Lithe, fast, beautiful, and of a rare Scandinavian bloodline, she is perhaps the ideal fast three-cabin cruiser. With air conditioning, heat, IPS-600, Hi-Lo functionality, and a passarelle, this fine late 2018 example is comprehensively specified and professionally maintained and prepared.

Price	£730,000 VAT paid
Location	Lymington, UK
Year	2018
LOA	46'4" / 14.15m
Beam	13' / 3.98m
Draft	3'9" / 1.2m
Displacement	10,700kg / 37,919lb
Hull Material	GRP
Engine	2 x Volvo IPS 600
Builder	Windy Boats AS
Designer	Hans J Johnsen
Accommodation	6 berths in 3 double cabins

These particulars have been prepared from information provided by the vendors and are intended as a general guide to the yacht, their accuracy cannot be guaranteed by us. The purchaser should confirm details of concern to them by survey or engineer's inspection. The purchaser should also ensure that the purchase contract properly reflects their concerns and specifies details on which they may wish to rely.







WINDSOR 43





















diprook 46



Raymarine

















Windy
Windy Technologies, Inc.
Creston, Oregon 97331
503-325-1111
www.windy.com
CEC
Windy Systems, Inc.
[Blank fields]















































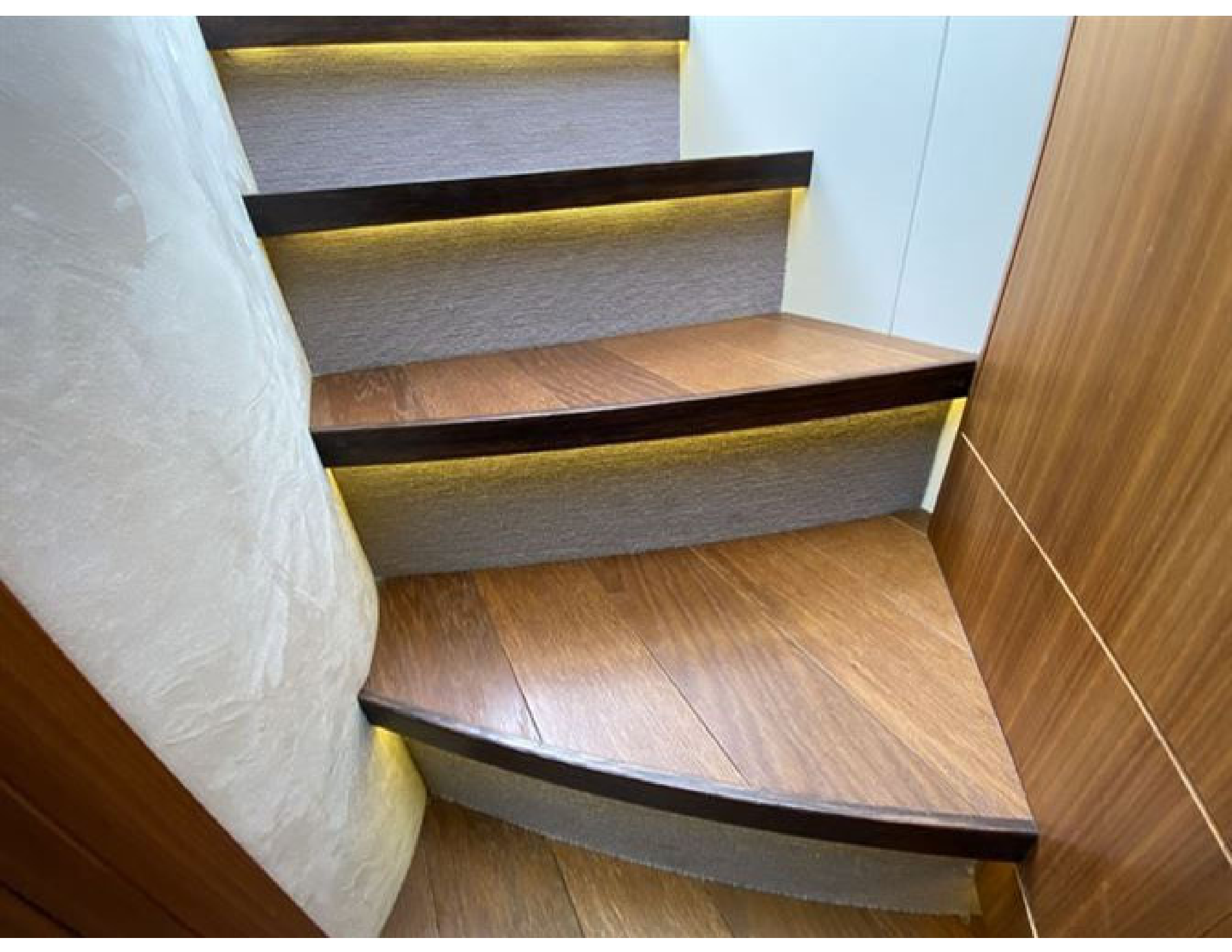




























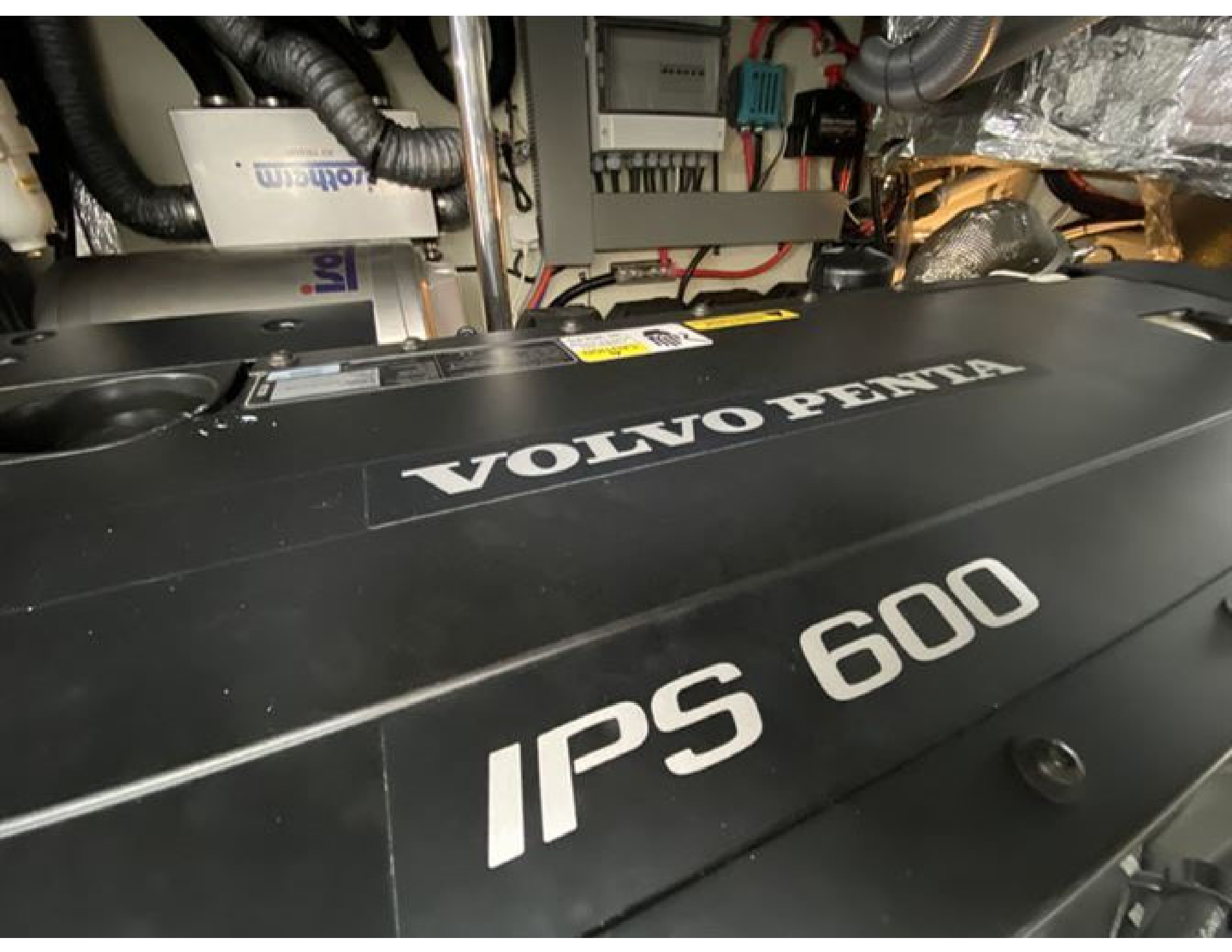


VOLVO PENTA
IPS 600

VOLVO PENTA
IPS 600

2017 Volvo Penta
IPS 600
Outboard Motor
Owner's Manual





VOLVO PENTA

IPS 600





Cummins Onan
Generator

No Step

Cummins Onan

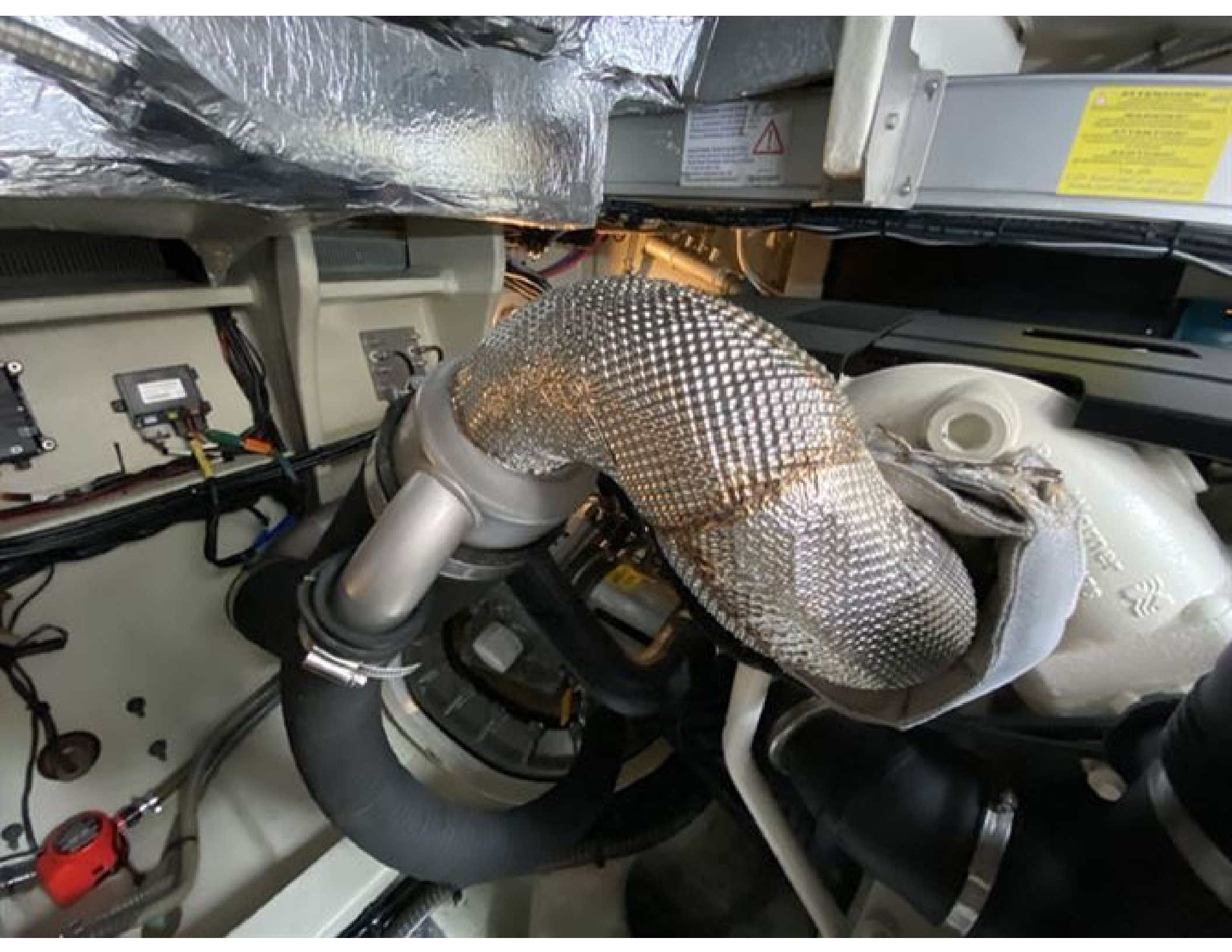
FUSION































POWER

THRUSTER

ON ON OFF

THRUSTER

ON ON OFF

THRUSTER

WAVE METER

0.0

LOW WAVE

1000

0

1000

0

1000

1000

0

1000

1000

0

1000

1000

0

1000

1000

0

1000

1000

0

1000

1000

0

1000

1000

0

1000

1000



**VOLVO
PENTA**

DOCKING

HIGH
MODE



STATON

LOW
SPEED

STATON

THROTTLE
ONLY

CRUISE
CONTROL

SINGLE
LEVER

FREE













O.N. 923352
N.T. 18.19



230V AC MONITORING

INPUT SOURCE

- ☐ GENERATOR
- ☐ BATTERY POWER 1
- ☐ BATTERY POWER 2

CHARGER / INVERTER

WATER HEATER

WARNING
DO NOT OPERATE WITH OPEN DOOR

STOP	STOP	STOP	STOP	STOP
☐	☐	☐	☐	☐
☐	☐	☐	☐	☐
☐	☐	☐	☐	☐

Two digital displays are located at the bottom of the panel.